



JOME
ENGINEERING L.L.C.



*‘Creating better service
for tomorrow’*



Mission

Providing on-time support to the marine & offshore industry for repairs & supply of machinery spares.

Introduction

JOME Engineering has been set-up in UAE and specializes in the after sales service Industry. We cater to the Marine & Offshore Industry mainly covering the verticals of:

Ship Repair Service's Supply - of complete Machinery & spare parts

With a highly skilled and experienced team of professionals in the Marine Industry we are able to support our clients requirements right from the planning phase of a project, through execution, commissioning & providing after sales support.

We work closely with various manufacturers and support customer's vessels trading in this region with their after sales service requirements and supply of Machinery parts.

Our state - of - the - art workshop which spans over an area of 160,000sq.ft and is equipped with latest machinery which aptly backs Our skilled service team who can provide on-board repair services round the clock to the Marine and Offshore Industry.

JOME supply division works very closely with manufacturers in Korea, Japan & Europe to assist ship owner with their requirements for machinery spare parts.



Available on Call 24/7



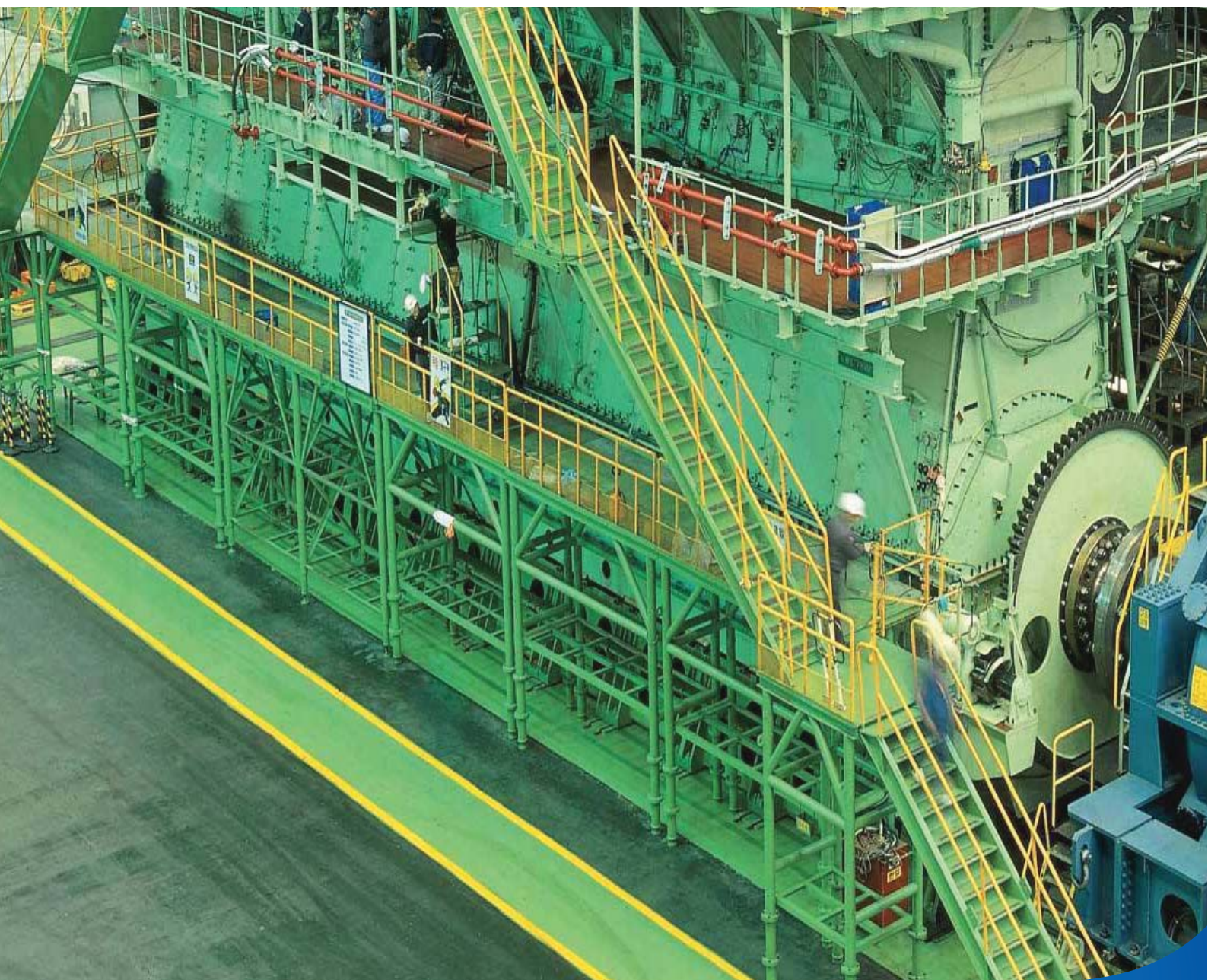
Business Activities:

Supply:

- Supply of complete machinery
- Supply of Main & Auxillary Engine parts
- Supply of Marine Equipment & spares

Service:

- Overhaul of Engine (M/E, A/E & Auxillary machinery)
- Overhaul of M/E components
- Voyage & Afloat Repairs
- Wear & tear repairs for deck & engine room



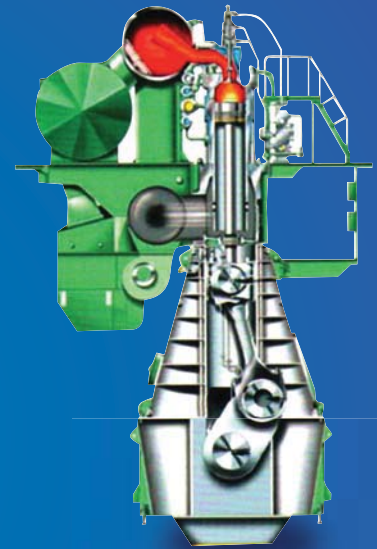


Parts supply of Main / Aux Engines

Main Engine (2-Stroke, Low speed)

JOME Engineering can supply genuine parts of 2-stroke diesel engine.

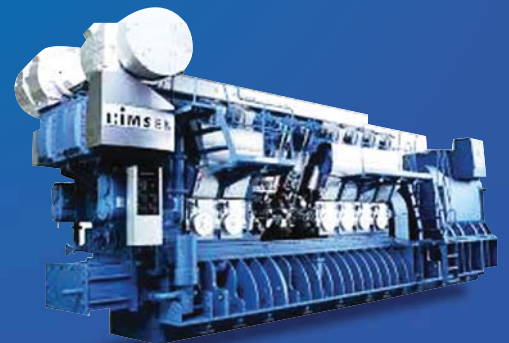
ENGINE			TYPE	
MAIN ENGINE	HYUNDAI MAN B&W	L-K90MC L-K80MC L-K70MC L-K60MC L-K50MC L-K42MC L-K35MC	K-98MC K-98MC-C K-90MC-C K-80MC-C K-70MC-C K-60MC-C K-50MC-C K-46MC-C	K108ME-C K98ME / ME-C S90ME - C K-90ME / ME-G1 K90ME-C S80ME / K80ME-C S70ME-C/ME-G1 L70ME-C S65ME-C / ME-G1 S60ME-C / ME-G1 L60ME-C S50ME-C
	HYUNDAI WARTSILA	RT-FLEX 96C, RTA96C RTA84C RT-FLEX 84T-D, RTA84T-D RTA72U-B RT-FLEX68-B, RTA68-B	RTA62U-B RT-FLEX60C RT-FLEX58T-B, RTA58T-B RTA52U RT-FLEX50, RTA50 RTA48T-B	



D/Gen Engine & Other Purpose Engine (4 Stroke , Medium Speed)

HHL - EMD has developed its own specially designed HiMSEN engine incorporating its valuable experience and technical know-how acquired in manufacturing diesel engines for over two decades.

D/Gen Engine (Medium Speed)		
ENGINE	FOR USE	TYPE
HYUNDAI HIMSEN	MARINE & OFFSHORE	H 17 / 28 (E) H21 / 32 H25 / 33 H 32 / 40 (V)
	MARINE PROPULSION	H21 / 32 P H 25 / 33 P H 32 / 40 P
	STATIONARY	H17 / 28 (G) H 17 / 28 H 21 / 32 (V) H 25 / 33 (V) H 32 / 40 (V.G.V)
HYUNDAI HOLEBY MAN B&W	MARINE	L 32 / 40 L 27 / 38 L 16 / 24 L.E.V 23 / 32 H.A.K L.E.V 23 / 30 H.A.K





Parts supply of marine equipment and machinery

JOME supplies genuine parts for marine equipment & machinery produced and supplied by manufacturers in Korea, Japan, China and Europe.

On request we can provide good quality OEM parts.

Machinery Parts:

Turbo Charger

Pumps

Incinerators

Compressor

Separators

Cranes

Heat Exchangers

PV Valves

Winches

Motors

Towing Eqp.

Level Indicators

Electrical spares

Steering Gear

Cargo Valves



JOME
works
closely
with

» Hyundai Engines

» Kangrim Boilers

» Donghwa Pneutec compressors

» Donghwa Entec

» Dongnam Marine Cranes

» Shin-Shin Pumps

» Aegir Marine

» STX Engines

» Tank Tech

» MRC

» Yoowon Industries

» DSR ropes

» Vesconite Bearings



JOME ENGINEERING L.L.C.

www.jo-me.com

Service and Repair of Engines and Marine Equipments

Services:

- Planning & Execution of Main Engine & Auxiliary Engine overhauls.
- Overhaul of bow thrusters
- Stern Tube Seals (Bonding)



- Overhaul of Turbochargers
- Overhaul & workshop repairs for auxiliary machinery like Cargo Pumps, Compressors etc.
- Boiler & Inert Gas Generator (IGG) automation services



- Condenser (re-tubing / cleaning)
- Plate heat exchanger (cleaning & re-gasketing)
- Special Coating services (approved applicator: WENCON)



- Hydraulic machinery repair (pumps, cylinders)
- Overhaul of Cranes & winches
- Provision of riding squad to carry out Auxiliary engine overhaul & other repairs
- Motor re-winding
- Dynamic balancing

Service partner for:

CSSC Marine Service Partner / Kangrim Boilers / Donghwa Pneutec Compressors / Aegir Marine (Stern Tube Seals & Thrusters) / Tank Tech / Vesconite Bearing

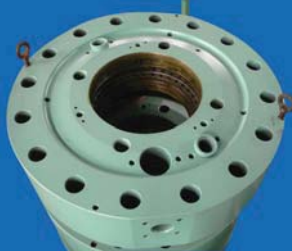
Reconditioning of Main/ Aux Engine Major components



PISTON CROWN



EXHAUST VALVE - SPINDLE & SEAT



CYLINDER COVER



EXHAUST VALVE CAGE



LINER DIAMETER MEASURING INSTRUMENT

LDM

Avoid unplanned off-hire and reduce overhauling costs through continual monitoring of the cylinder condition.

Pre-inspect cylinder condition before a piston overhaul to minimize downtime and cost.

- * Innovative measuring tool for 500- 980 mm bore 2 - stroke cylinder liners
- * Safe , fast and accurate measuring of cylinder liner wear and clover-leafing
- * No need to remove cylinder cover prior to measurement
- * Measuring results available in excel and report format

Fabrication Facility

- » Pre fabrication of structure and pipeline for BWTS & Scrubber system
- » Conversion of containers (20 & 40 feet for offshore)
- » Fabrication of Tanks
- » Strainer basket
- » Pipe spools (CS/SS)
- » SS Bellows
- » Manifold reducers and 'S' bends (SS & CS)
- » Offshore cargo basket

✓ Welders - DNV Approved



Hydraulic Division

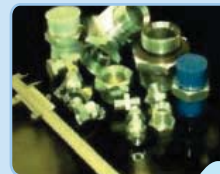
Stainless Steel Hoses, Bellows



Stainless Steel



Composite Hoses



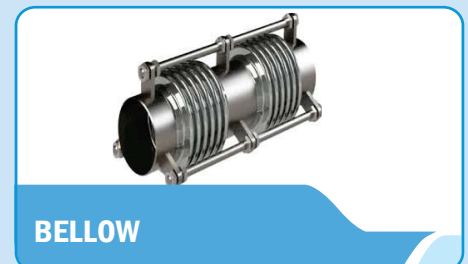
**ULTRA HIGH PRESSURE
JETTING HOSES**



**THERMOPLAST
HOSES**



**METALLIC HOSE &
EXPANSION JOINTS**



BELLOW

Oilfield Supplies



15 K DSA & RISER SPOOL
MATERIAL : AISI 4130
API 16A, H2S SERVICE

BIT BREAKER & ADAPTER
SIZE : 17-1/2"
FOR 37-1/2" MASTER BUSHING



PLUG VALVE
MAKE : NOV

TOP DRIVE SAVER SUB
7-5/8" Reg Pin X HT55 Pin , 7" L
API-7-1 Phosphate coated



DSA & SPOOLS
C/W Studs, Nuts, API 5k - 15k
H2s Service, AISI 4130

FABRICATION OF MANLIFT
C/W Load test certificate

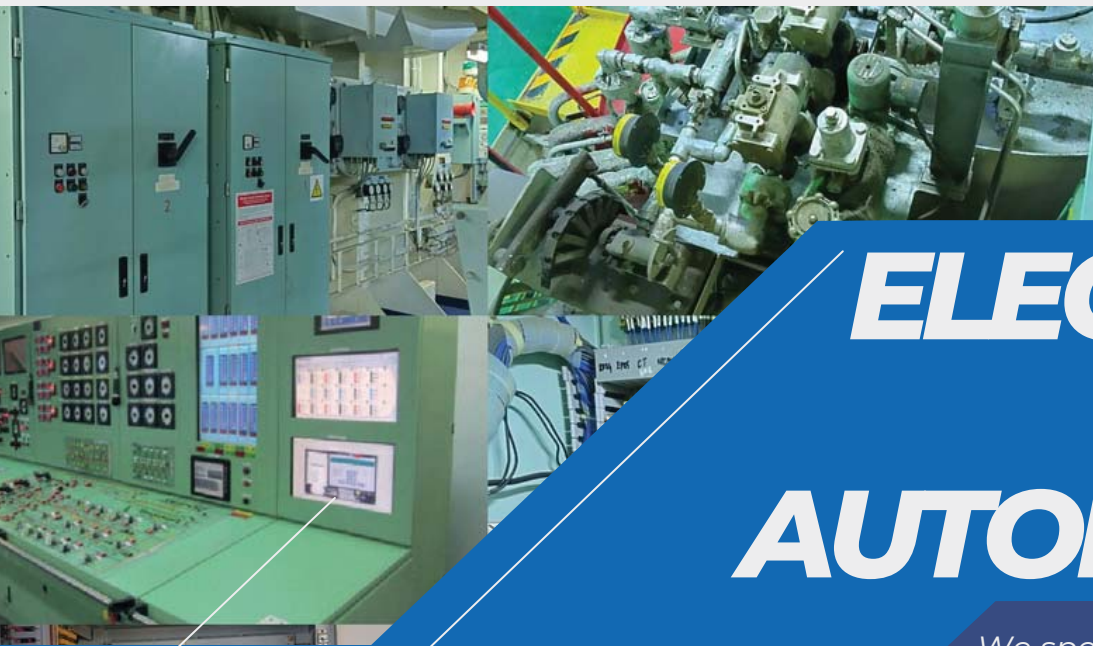


OVERHAULING MUD PUMP

OVERHAULING CEMENTING UNIT



JOME
ENGINEERING L.L.C.



ELECTRICAL & AUTOMATION

We specialize in providing top-notch Marine Electrical and Automation Services, designed to power your vessels with innovation, efficiency, and safety.

OUR SERVICES

- **BOILER, IGG & IG AUTOMATION SYSTEM (KANGRIM AUTHORIZED SERVICE PARTNER)**
- **INTEGRATED ALARM MONITORING SYSTEM**
- **PNEUMATIC PROCESS CONTROL SYSTEM**
- **OIL MIST DETECTOR**
- **MAIN ENGINE CONTROLS**
- **CONTROLLED PITCH PROPELLER SYSTEM**
- **SEWAGE TREATMENT PLANT**
- **TANK LEVEL GAUGING SYSTEM**
- **OILY WATER SEPERATOR**
- **CRANES AND WINCH CONTROLS**
- **GENERATOR CONTROLS & AVR**
- **FIRE DETECTION SYSTEMS**
- **GAS DETECTION SYSTEMS**
- **VALVE REMOTE CONTROL SYSTEM**

NEW INSTALLATIONS

- *Ballast Water Treatment Systems*
- *Shaft Power Monitoring & Limitation Systems*
- *Various Types of VFD and Starter Panels*
- *Interlock / Indication Mimic Panels*
- *PA Systems / General Alarm Systems*



info@jo-me.com | automation@jo-me.com

+971 4871 5858

www.jo-me.com

**CREATING BETTER
SERVICE FOR TOMORROW**

WE ARE JOME

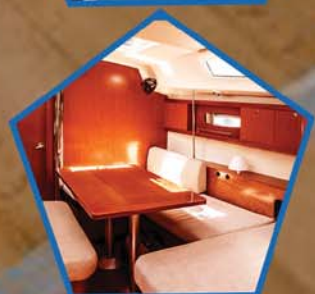
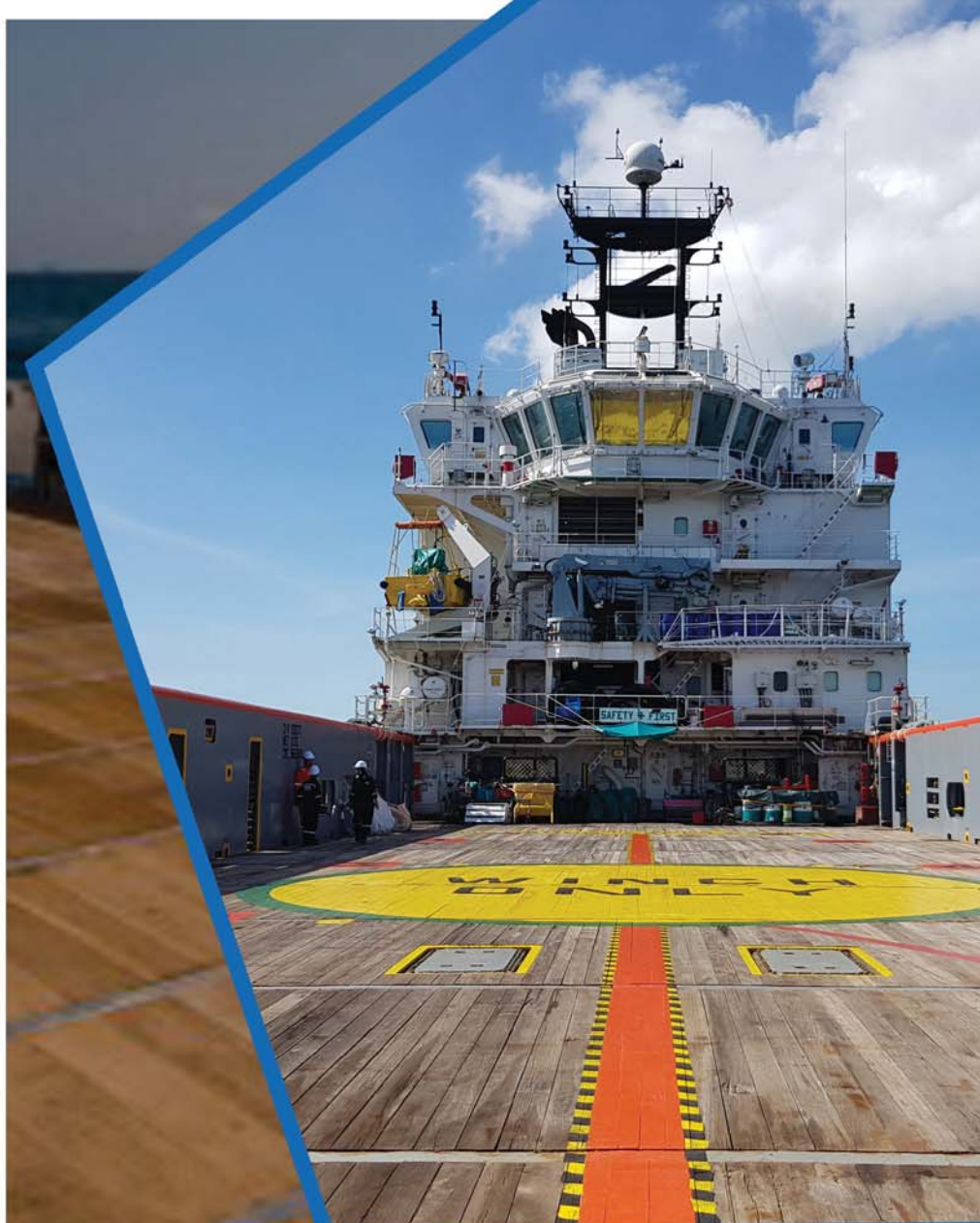
Creating Better Service For Tomorrow

ADDING NEW FEATURE TO OUR SERVICES

- ✓ **DECKWOOD**
- ✓ **CARPENTRY**
- ✓ **FLOORING**
- ✓ **INSULATION \ LAGGING**
- ✓ **MASONRY**
- ✓ **PLUMBING**

GET IN TOUCH

- ☎ +971 48715858
- ✉ info@jo-me.com
- 🌐 www.jo-me.com
- 📍 DUBAI, UAE



WE AT JOME ENGINEERING LLC BELIEVE IN BEING A ONE STOP SHOP SERVICE PROVIDER IN ALL ACCESS OF SHIP REPAIR.



MASONRY



PLUMBING

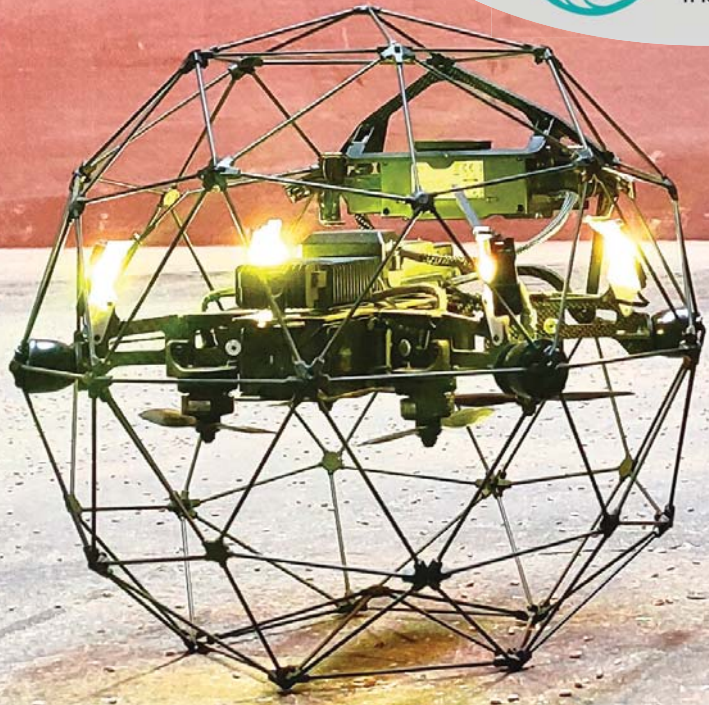


CARPENTRY



INSULATION

REMOTE SURVEILLANCE OF SHIP SCANTLING USING UAV



DISCOVER THE FUTURE OF SHIP INSPECTIONS WITH DRONE TECHNOLOGY

UNVEILING A NEW ERA IN MARITIME EXCELLENCE

JOME Engineering is a leader in innovative solutions for the maritime industry. With our cutting-edge drone technology, we're transforming ship inspections for enhanced safety, efficiency, and accuracy. Join us in embracing the future of maritime excellence!

PARTNERSHIP

JOME Engineering Partners with GDI for Revolutionary Ship Inspections in UAE. Under the umbrella of our JV we have ABS, DNV, LR, CLASSNK, BV, RINA, KRS and IRCLASS approvals.

Unmatched Precision: High-resolution cameras capture even the smallest details for thorough inspections.

Safety Above All: Eliminate risks by sending drones to assess hard-to-reach areas.

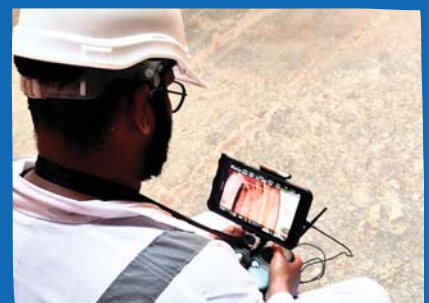
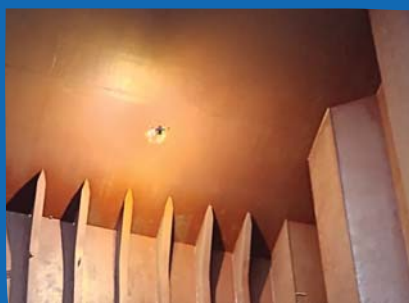
Time-Efficient: Rapid inspections cover extensive areas in significantly less time than traditional methods.

Cost-Effective: Reduce expenses associated with scaffolding, equipment, and labor.

Ship Hulls, Cargo Holds, Tanks: From hulls to cargo holds, drones inspect all critical areas around the ship.

Enhance Compliance: Maintain regulatory standards and records with detailed drone inspection reports.

- 4K and FHD Recording
- Distance lock Feature
(For accurate distance recording)
- Thermal imaging feature
- Linear dimension from High Res Images



ARE YOU READY TO EXPERIENCE THE FUTURE OF MARITIME INSPECTIONS ?
REACH OUT TO US





JOME
ENGINEERING L.L.C.

